

## Z1186 OIL INTERCEPTOR



### ENGINEERING SPECIFICATION

Zurn Z1186 oil interceptor features acid resistant coated interior and fabricated steel exterior, bronze cleanout plug and visible double wall trap seal, removable combination pressure equalizing/flow-diffusing baffle and sediment bucket, horizontal baffle, adjustable oil draw-off, and vent connections (either side). Gasketed, non-skid, secured cover comes complete with flow control fitting. Regularly furnished with inlet and outlet in high position.

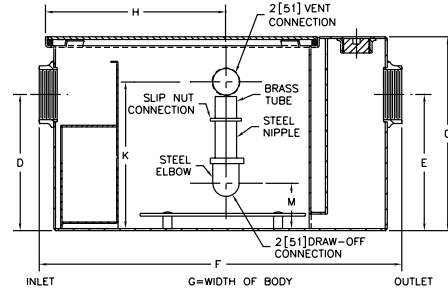
### NOTES

Location of outlet from bottom of interceptor cannot be changed.

\*Inlet and outlet sizes shown indicate standard operating sizes and flow control settings. Size #300 and #400 will have 3" connections reduced to 2" as standard. Size #700 and #800 will have 4" connections reduced to 3" as standard.

### CAUTION

Interceptors must be maintained periodically in order to ensure proper operation of the system. Follow cleaning schedule based on usage.



PREFIXES	DESCRIPTION	SIZE	LIST PRICE
<b>Z1186*</b>	Acid Resistant Coated Fabricated Steel	300	<b>5,602.00</b>
		400	<b>7,685.00</b>
		500	<b>9,289.00</b>
		600	<b>10,089.00</b>
		700	<b>12,265.00</b>
		800	<b>16,496.00</b>

SUFFIXES	DESCRIPTION	ADD		
		SIZE	EA. ADDITIONAL 1" OVER 6"	UP TO 6"
<b>-E</b>	Acid Resistant Coated Interior and Exterior Fabricated Steel Extension Section. (Specify 'C' dimension required for recessed installation.)	300	<b>230.00</b>	<b>5,242.00</b>
		400	<b>259.00</b>	<b>5,310.00</b>
		500	<b>292.00</b>	<b>5,461.00</b>
		600	<b>333.00</b>	<b>5,621.00</b>
		700	<b>365.00</b>	<b>5,832.00</b>
		800	<b>422.00</b>	<b>6,960.00</b>
<b>-HD</b>	Heavy duty traffic cover rated at 10,000 lbs. maximum safe live load. A 3" minimum extension height is required when Heavy Duty Cover (-HD) option is specified. (Specify 'C' dimension height required.)	300		<b>5,954.00</b>
		400		<b>6,401.00</b>
		500		<b>6,778.00</b>
		600		<b>7,157.00</b>
		700		<b>7,911.00</b>
		800		<b>8,285.00</b>
<b>-K</b>	Anchor flange 1-3/4" down from top and 2" wide. A 3" minimum extension height is required when anchor flange (-K) option is specified. (Specify 'C' dimension height required.) Price for -E plus -K.	300		<b>1,429.00</b>
		400		<b>1,429.00</b>
		500		<b>1,542.00</b>
		600		<b>1,605.00</b>
		700		<b>1,687.00</b>
		800		<b>1,719.00</b>
<b>-KC</b>	Anchor flange 1-3/4" down from top and 2" wide with clamp collar. A 3" minimum extension height is required when anchor flange (-KC) option is specified.	300		<b>1,719.00</b>
		400		<b>1,719.00</b>
		500		<b>1,719.00</b>
		600		<b>1,917.00</b>
		700		<b>1,990.00</b>
		800		<b>2,264.00</b>
<b>-PW</b>	Plug Wrench			<b>83.00</b>
<b>BEST SELLERS</b>				<b>LIST PRICE</b>
Z1186-300-2NH				<b>5,602.00</b>
Z1186-500-3IP				<b>9,289.00</b>
Z1186-600-3IP				<b>10,089.00</b>
Z1186-800-3IP				<b>16,496.00</b>

Size	Inlet/Outlet <sup>†</sup> inch [mm]	Flow Rate gpm [LPM]	Water Capacity gallon [L]	Approximate Weight lb [kg]	Dimensions in inches [mm]						
					C	D/E	F	G	H	K	M
300	2 [51]	10 [38]	7 [26]	56 [25]	13-5/8 [346]	8-1/8 [206]	25-1/8 [638]	14 [356]	11-5/8 [295]	11 [279]	2-3/4 [70]
400		15 [57]	9 [34]	77 [35]	14 [356]	8-1/4 [210]	25-1/4 [641]	14-1/8 [359]			
500	3 [76]	20 [76]	10 [38]	106 [48]	15-1/2 [394]	9-3/8 [238]	27-1/8 [689]	16-3/4 [425]	13-1/4 [337]	12-1/2 [318]	2-1/2 [64]
600		25 [95]	16 [61]	116 [53]	18-1/4 [464]	11-3/4 [298]	30 [762]	17-1/4 [438]	16 [406]	15-1/4 [387]	4 [102]
700		35 [132]	21 [79]	140 [64]	19-3/4 [502]	12-1/2 [318]	32-1/4 [819]	19-7/8 [505]	16-3/8 [416]	16-3/4 [425]	4-11/16 [119]
800		50 [189]	30 [114]	171 [78]	24-1/4 [616]	14-1/4 [362]	34-1/8 [867]	22-1/2 [572]	17-1/4 [438]	21-1/4 [540]	6-7/16 [164]

\*Regularly furnished unless otherwise specified.

Items designated as Best Sellers are most specified and are generally in stock for shipment.

For additional product information, please visit [www.zurn.com](http://www.zurn.com)

INTRO  
 ROOF DRAINS  
 FLOOR DRAINS  
 T, P, BW VALVES  
 INTERCEPTORS  
 CARRIERS  
 HYDRANTS  
 CLEANOUTS  
 WHA  
 SS DRAINS  
 FAB SS DRAINS  
 SAN-FLOOR  
 TECH INFO